

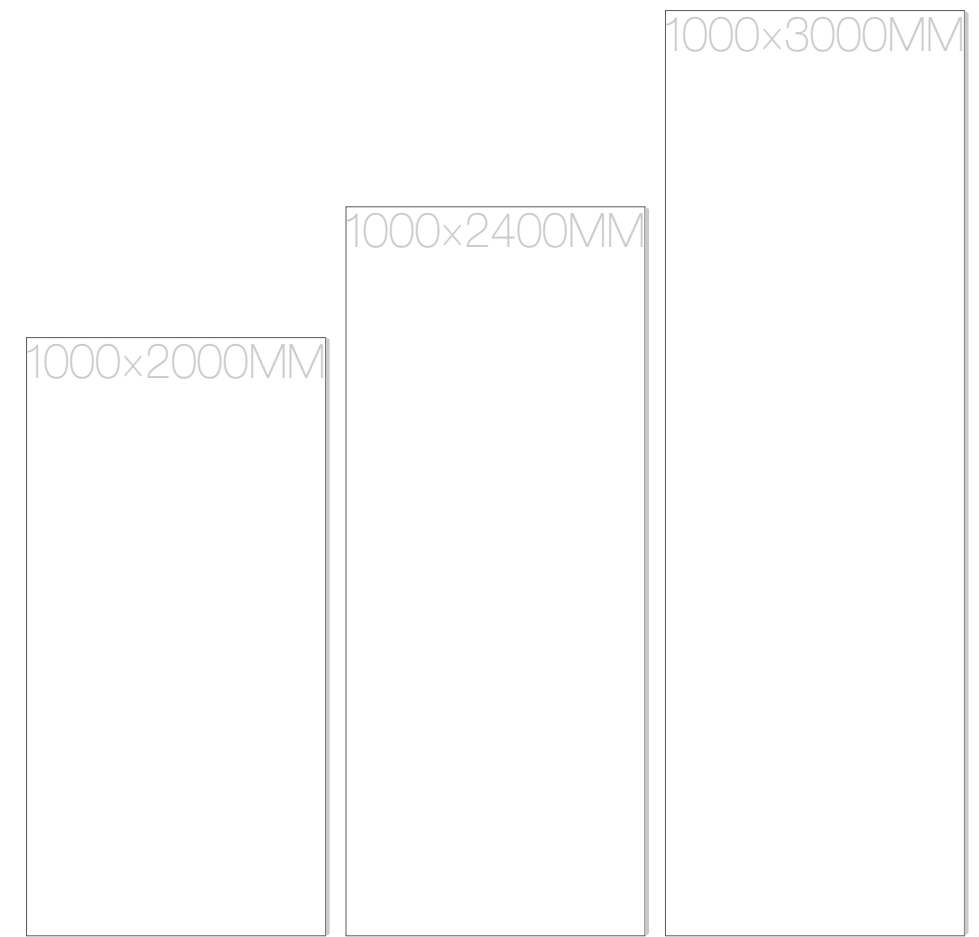


廈門三榮陶瓷開發有限公司
XIAMEN SANWON CERAMIC LTD.
地址：福建省廈門市翔安區內厝
Add: Neicuo XiangAn Xiamen China E-mail:sale@sanwon.net
Homepage:www.sanwon.net

2018.05

THIN TILE





极致大板·以薄触感

4.5MM

EXTREMELY LARGE BOARD WITH A THIN TOUCH

三荣陶瓷简介

SANWON CERAMIC INTRODUCTION

厦门三荣陶瓷开发有限公司成立于 1993 年，总部坐落于福建省厦门翔安，是由台湾集六十余年瓷砖产销经验的三和、三普、协山三大知名窑业集团联合斥资 4000 万美元成立的综合性陶瓷集团。主要产品包括：陶瓷薄板、仿古砖、外墙砖、马赛克等。

全厂占地 20 万平米，采用意大利进口设备。自 1995 年初集团正式投产以来，即因产品经检验无辐射作用的超高质量，荣获国家建材局核定为“优质瓷砖”的最高评价。并先后荣获“福建省著名商标”、“福建省名牌产品”、“中国第一份出口产品安全质量认证证书”、“厦门高新技术企业”、“中国绿色建筑陶瓷推荐证书”等荣誉。三荣陶瓷业已通过“ISO9001:2015”、“ISO14001:2004”双认证，为顾客提供更坚实的质量保证。

“三荣品质，世界知道”，为“中国扬眉吐气，让世界刮目相看”是三荣力求突破的目标。目前集团产品已广销海内外，更风行美日市场。展望未来，三荣陶瓷将继续秉持“诚信、团结、开拓、分享”的经营理念，为创造更美丽的环境空间而努力！

Xiamen Sanwon Ceramic Ltd., established in 1993, is a large-scale kiln group jointly invested by three famous Taiwan kiln groups as San ho, San pu and Xieshan, all of which have over 60 years experience in production and sales, with an investment of USD40 million.

The headquarters of the enterprise locates in Xiang'an, Xiamen of Fujian Province and the Ri Sheng Plant, which produces glass blocks, is located in Zhangzhou. Sanwon Group enjoys excellent ocean, land and air transport advantages with such important transport constructions as Fu-Xia Expressway, Quanzhou International Airport, Xiamen International Airport, Xiamen Railway Station and Liu Wu Dian Port with a potential 5000t cargoes within 50km away from it, which enables the group to finish the supplies and orders from all over the

world. The whole plant covers an area of 200,000sqm, the full load kiln energy can operate 16 automatic and rapid roller kilns at the same time, and the whole plant adopts currently most advanced Italy SACMI Rapid Roller Kilns.

Since the group was listed in market in 1995, it has been approved as the highest evaluation of Excellent Ceramic Tile by State Administration of Construction Materials due to its high quality products without radiation, and for which, the People's Government of Fujian Province granted the group with the reputation of Provincial Famous Trade Mark. The group also obtained the First Safety Quality Certification for Export Products, which is the highest reputation of the nation, granted by China Quality Certification Center for Import and Export due to its National Best Products, which was

upgraded as ISO9001 International Quality Certification in 2001, all of which provide more solid quality and assurance for the customers. To promote environmental protection concept and the development of energy-saving in future, the group was devoted into the reformation and was granted by the People's Government of Xiamen as Advanced Enterprise for Energy-saving in 2006 and the High-tech Enterprise Certification granted by Xiamen Administration of Science and Technology in May, 2007. Till now, the serious products of the Group, except being famous in both home and abroad and popular in Japan, have successfully entered into the wide European and American markets and have entered the world largest American supermarket for construction materials and international first class brand, which has been the hundred year story of China.

INTRODUCTION

大板 5 大优势

OSAKA 5 ADVANTAGES



超大规格，效果大气

三荣拥有 1000×2000mm, 1000×2400mm, 1000×3000mm 这三种行业最大规格的大板。单块大板可以承载更多更流畅的纹理脉络，不仅增加家居的空间感，还给人一种简约大气的感觉。

绿色环保，健康生活

三荣大板原材料选自纯天然黏土与非金属原料，让家居更加绿色，生活更加健康。

切割自由，铺贴方便

三荣大板可铺贴的面积比传统瓷砖的面积要大，设计师可根据设计需求来任意切割大板，运用灵活自如，达到一板多用的功能。不仅可以节省铺贴时间，还降低装修成本。

轻薄材质，搬运方便

三荣大板尽管拥有超大规格，厚度却只有 4.5 毫米，材质轻盈，搬运更加省力，运输较为方便。铺贴实现“无缝链接”，减少藏污纳垢的缝隙，避免重复打扫的麻烦。

应用广泛，灵活多变

三荣大板可应用于家装与公装，可铺贴的地方有地板，上墙，楼梯，甚至充当茶几，书桌等。应用广泛，组合搭配多样，运用灵活多变，因此受到广大群众的喜爱。

升级工艺 卓越性能

UPGRADE PROCESS SUPERIOR PERFORMANCE

3D 立体塑印技术

运用先进的立体塑印技术，通过多层次、多角度的高清立体绘印，大板表面的花纹与色彩更加细腻逼真，图案更显出层次感、立体感，栩栩如生，达到一个新的表现境界。

选用进口原料

选用欧洲进口优质原料，加工制成坚固大板材身，具备防滑、防渗、防断、防污、耐磨等卓越性能，极大增加大板的使用寿命，无需时常打理与更换，使用更省心。

材质绿色环保

高致密度的石材层面使得板体吸水率低于 0.5%，能够强力抵抗任何污浊的液体。加上坯底为无放射性的绿色环保原料，解决了石材的放射性与渗污问题，低碳环保。

4.5MM

INDEX

01

p01-02 企业简介
Company profile

p03-04 产品优势
Product advantages

p05-06 工艺性能
Process performance

02

p07-42 产品系列
Product series

p43-67 应用空间
Application space

p68 重点工程
Key projects

03

p69-76 产品总览
Product overview

p77-78 施工说明
Technical details

p79-80 技术参数
Technical parameters

every detail is coordinated, delicate design, make the whole space concise, bright, furniture and decoration layout, create such a delicate beautiful, warm and comfortable space.

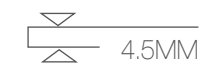
每一处细节都协调统一，细腻的设计，使得整个空间简练、明亮，家具和装饰品布置其中，营造出如此精致美观、温馨舒适的空间。



SOLID COLOR(GLAZED) / BSP09 / 1000x3000MM

纯色（釉面） SOLID COLOR(GLAZED)

1000x2000MM / 1000x2400MM / 1000x3000MM



BSP01

BSP05E

BSP08A

BSP05C

BSP03A

BSP05B

BSP07A

BSP09

BSP06A

BSP10A



SOLID COLOR(GLAZED) / BSP10A / 1000x3000MM



PURE COLOR (FULL BODY) / BSF04+BSF25 / 1000x3000MM



PURE COLOR (FULL BODY) / BSF19+BSF29 / 1000x3000MM

纯色 (通体) PURE COLOR (FULL BODY)

1000x2000MM / 1000x2400MM / 1000x3000MM

4.5MM

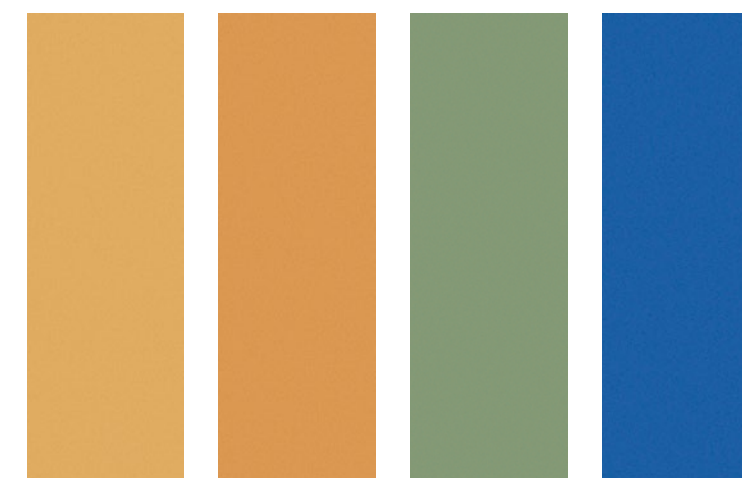


BSF15

BSF25

BSF19

BSF29



BSF18

BSF28

BSF04

BSF07



WALL PAPER / BSZ10 / 1000x3000MM



WALL PAPER / BSZ08 / 1000x3000MM

MODERN SIMPLICITY

The excellent appearance of ceramic tiles with special materials to use, so that the texture of the space is very rich, but also reflects a variety of combined life experience, adding special vitality to the space.

外观效果出众的瓷砖搭配特别的材质来运用，使空间的质感非常丰富，也反映出多样结合的生活体验，为空间增添了特别的活力。

布纹 WALL PAPER

1000x2000MM / 1000x2400MM / 1000x3000MM

4.5MM



BSZ05

BSZ08

BSZ09

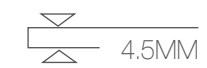
BSZ10



EMPIRE / BSD10 / 1000x3000MM

帝国 EMPIRE

1000x2000MM / 1000x2400MM / 1000x3000MM



BSD01

BSD02

BSD05

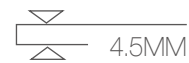
BSD10



STYLE SELECTIONS / BSS01A+BSS10 / 1000x3000MM

时尚 STYLE SELECTIONS

1000x2000MM / 1000x2400MM / 1000x3000MM



STYLE SELECTIONS / BSS10+BSS03 / 1000x3000MM



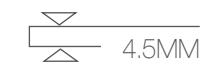
BREEZE / BSI05 / 1000x3000MM



BREEZE / BSI10A(F) / 1000x3000MM

微风 BREEZE

1000x2000MM / 1000x2400MM / 1000x3000MM



BSI02

BSI05

BSI05A

BSI06

BSI09

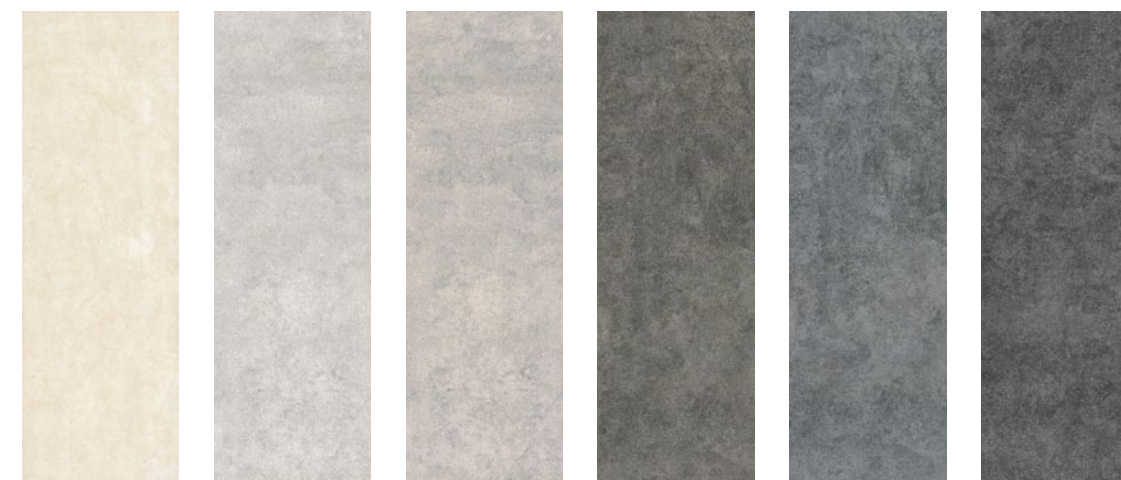
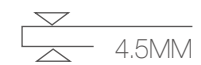
BSI10A(F)



CASTLE / BSR02 / 1000x3000MM

古堡 CASTLE

1000x2000MM / 1000x2400MM / 1000x3000MM



BSR02 BSR05 BSR15 BSR04 BSR07 BSR10

MINIMALIST FASHION

The fashionable room breath, the simple decoration is clear and cheerful, gives the person a kind of clean comfortable feeling, melts into the modern fashion design, in the leisure reveals a light elegant.

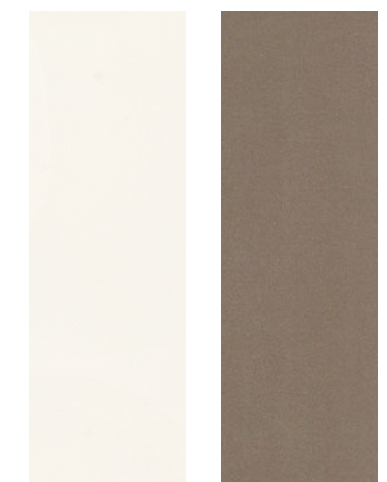
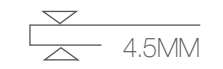
时尚的居室气息，简约的装修明净开朗，给人一种干净的舒适感，融入现代时尚设计，闲适中透露出一股淡淡的雅致。



SAND RIPPLE / BSE09 / 1000x3000MM

沙纹 SAND RIPPLE

1000x2000MM / 1000x2400MM / 1000x3000MM



BSE01

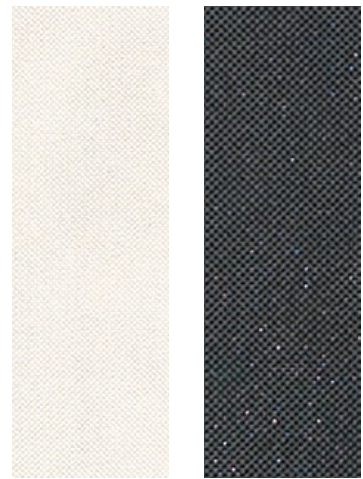
BSE09



PEARL / BSG10B / 1000x3000MM

珍珠 PEARL

1000x2000MM / 1000x2400MM / 1000x3000MM



BSG01A

BSG10B

ARTISTIC SPACE

The floor tile with unique texture sets off the whole space, and the design and arrangement of the modern space with both simplicity and line aesthetic sense, describes the most beautiful space with the least strokes, and presents a simple and extraordinary artistic effect.

独具质感的地砖衬托起整个空间，兼具简约与线条美感的现代空间的设计与布置，用最少的笔画描写最美的空间，呈现出简而不凡的艺术效果。



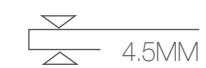
RUST / BSX07(F) / 1000x3000MM



RUST / BSX06(F) / 1000x3000MM

铁锈 RUST

1000x2000MM / 1000x2400MM / 1000x3000MM



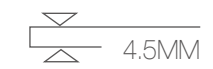
BSX06(F)

BSX07(F)



皮纹 LEATHER

1000x2000MM / 1000x2400MM / 1000x3000MM



LEATHER / BSQ01+BSQ02 / 1000x3000MM



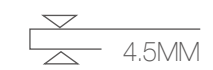
BSQ01

BSQ02



雕花 EMBOSS

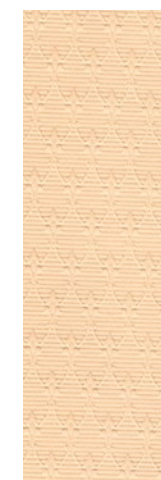
1000x2000MM / 1000x2400MM / 1000x3000MM



EMBOSS / BSM01 / 1000x3000MM



BSM01



BSM02

SIMPLE CHARM

It looks simple, but it pays much attention to detail. There is no redundancy in the whole design and the charm of modern simplicity is revealed in it.

看上去简约，实则非常注重细节的雕琢，整体设计没有丝毫冗余，不加雕饰之中透出现代简约的魅力。



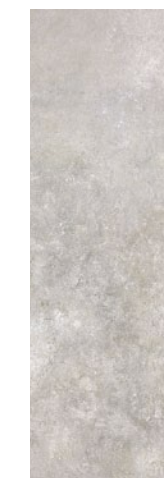
SILICASTONE / BSO05 / 1000x3000MM



SILICASTONE / BSO05 / 1000x3000MM

硅岩 SILICASTONE

1000x2000MM / 1000x2400MM / 1000x3000MM



BSO05



SLATE STYLE / BSL02 / 1000x3000MM



SLATE STYLE / BSL02 / 1000x3000MM

板纹 SLATE STYLE

1000x2000MM / 1000x2400MM / 1000x3000MM



BSL02



WOOD LOOK / BSW06A / 1000x3000MM



WOOD LOOK / BSW09 / 1000x3000MM



WOOD LOOK / BSW08 / 1000x3000MM

木纹 WOOD LOOK

1000x2000MM / 1000x2400MM / 1000x3000MM

4.5MM



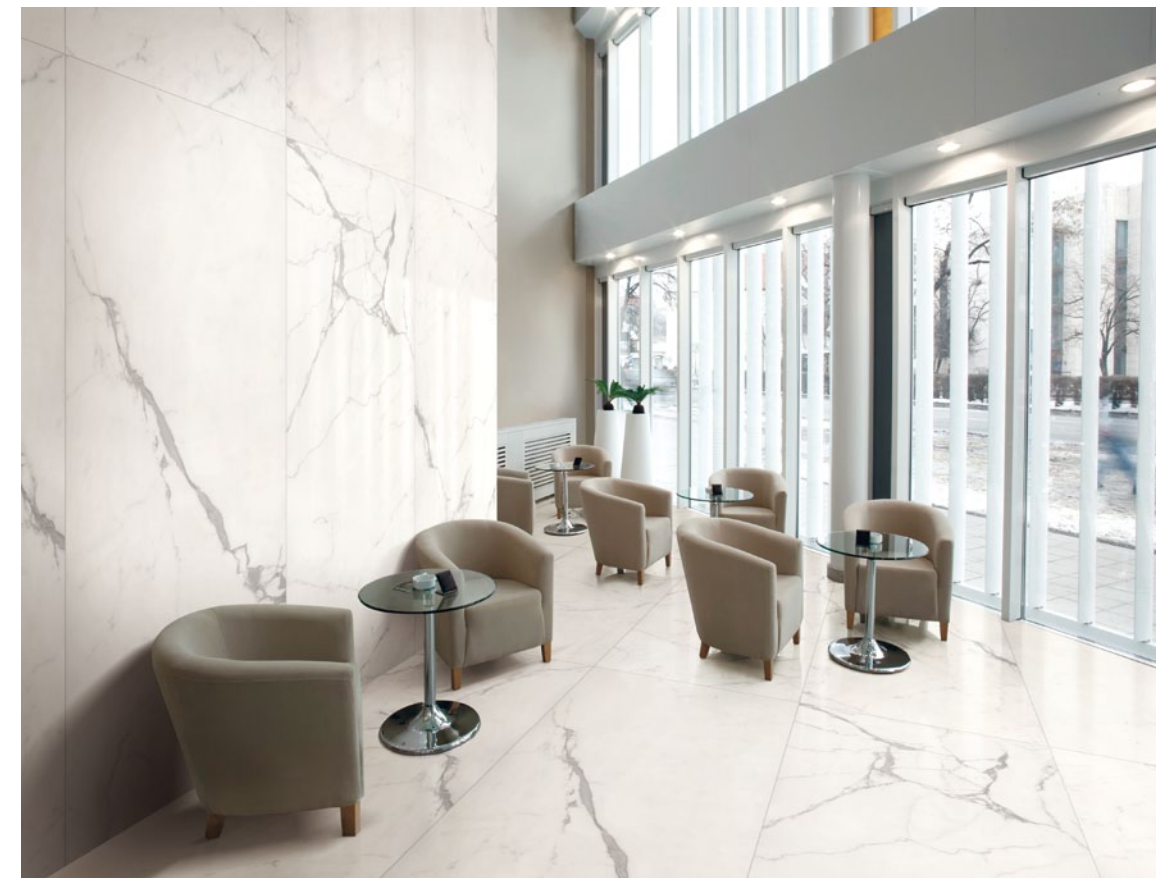
BSW08

BSW09

BSW06A



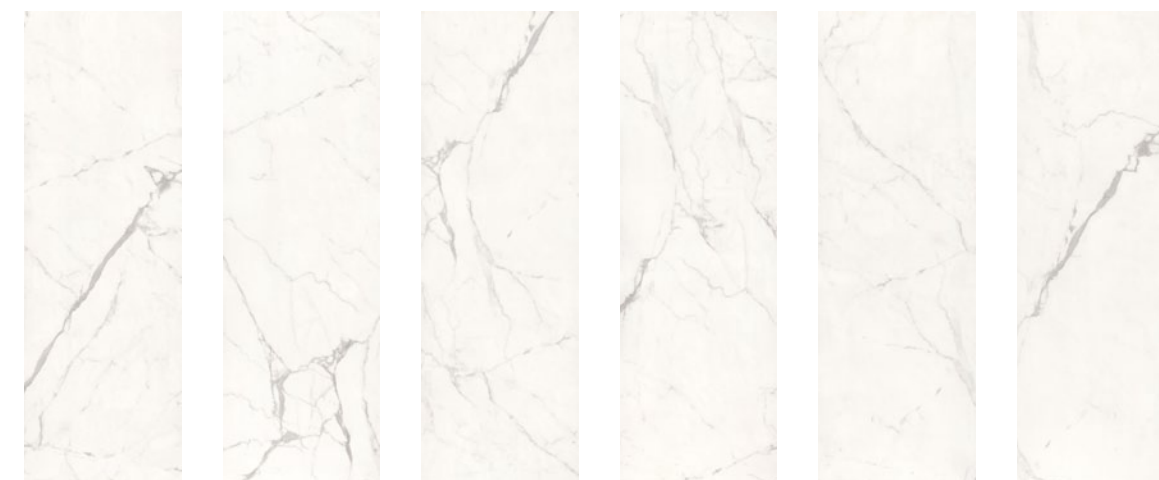
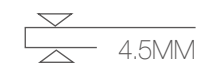
CARRARA (SIX PATTERNS) / BST01B / 1000x3000MM



CARRARA (SIX PATTERNS) / BST01B / 1000x2400MM

卡拉拉（一体六面） CARRARA (SIX PATTERNS)

1000x2000MM / 1000x2400MM / 1000x3000MM

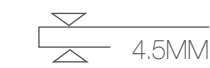


BST01B(A) BST01B(B) BST01B(C) BST01B(D) BST01B(E) BST01B(F)



卡拉拉 (对拼) CARRARA(SYMMETRY)

1000x2000MM / 1000x2400MM / 1000x3000MM



BST01C(A)

BST01C(B)



CARRARA(SYMMETRY) / BST01C / 1000x3000MM



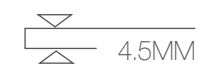
CUSTOMIZED PRODUCT / BSF10B / 1000x3000MM



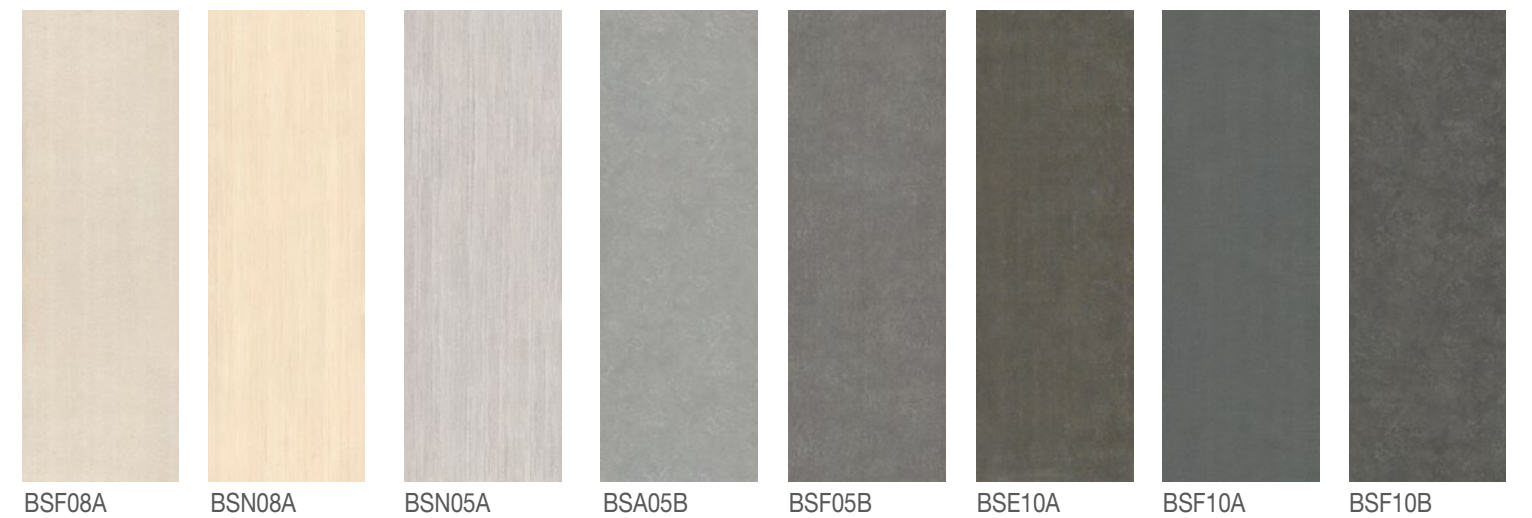
CUSTOMIZED PRODUCT / BSA05A / 1000x3000MM

客定品 CUSTOMIZED PRODUCT

1000x2000MM / 1000x2400MM / 1000x3000MM



BSE01A BSP01B BSJ05A BSA05A



BSF08A BSN08A BSN05A BSA05B BSF05B BSE10A BSF10A BSF10B

陶瓷薄板应用空间 CERAMIC PLATE APPLICATION SPACE

Modern space design stresses the beauty and functionality of space. And material as the material of space decoration, not only need to have outstanding performance, the scope of application space is also important. Sanrong ceramic board, with humanized design, excellent material, multi-function space application, is a special ceramic board for space, suitable for home, office, medical, hotel, curtain wall, public wear, hardcover, furniture, Art 9 big living place. A big board can be used for more space, making every place as comfortable as an imager, adding more fun to life.

现代空间设计，讲究空间的美观性与功能性。而材质作为空间装饰的材料，不但需要有卓越的性能，应用空间的范围同样重要。三荣陶瓷大板，拥有人性化的设计，优良的品质，多功能的空间应用，是为空间专门打造的陶瓷大板，适用于家居、办公、医疗、酒店、幕墙、工装、精装、家具、艺术 9 大生活场所。一种大板，可以实现更多的空间用途，将每一个场所都打造成像家一样舒适的地方，为生活增添更多的乐趣。

家居篇 Home articles



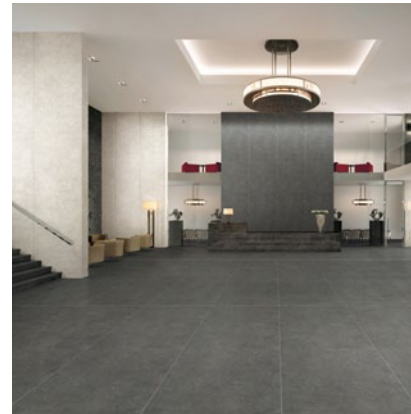
办公篇 Office articles



医疗篇 Medical articles



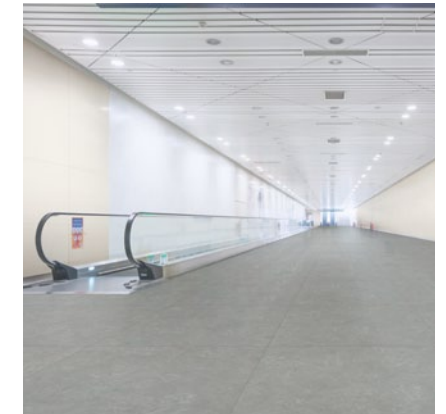
酒店篇 Hotel articles



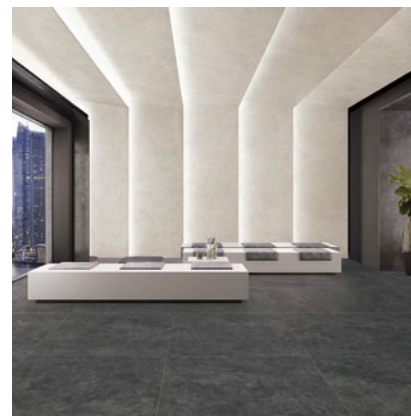
幕墙篇 Curtain wall



工装篇 Public articles



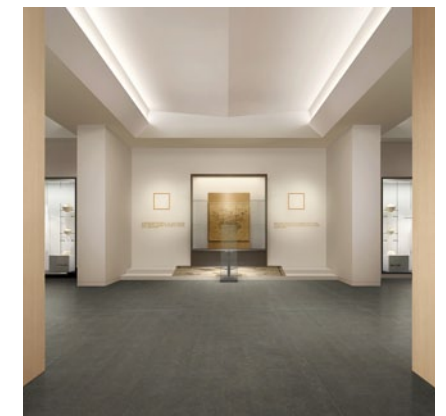
精装篇 Hardcover articles



家具篇 Furniture articles



艺术篇 Art articles



ELEGANT STYLE

Simple techniques to create a special texture of the space, the color of the unified material into it, further improve the style and grade of space, visual effects more outstanding.

简约的手法打造出质感非凡的空间，将色彩统一的材质融入其中，进一步提升了空间的格调与档次，视觉效果更为出众。



CUSTOMIZED PRODUCT / BSN05A / 1000x3000MM



STYLE SELECTIONS / BSS03 / 1000x3000MM



CARRARA / BST01C(A)BST01C(B) / 1000x3000MM



CARRARA / BST01B / 1000x3000MM

MODERN MINIMALISM

Simple and uniform tonal decoration, so that public areas of vision open.
Modern very strong space, simple and beautiful lines of large decorative layout,
reflecting the overall design of personality requirements.

简单统一的色调装饰，使公共地方视野开阔。现代感十分强烈的空间，简单
而富有线条美的大板装饰布置，体现出整体设计对个性的要求。





CASTLE / BSR10 / 1000x3000MM



CASTLE / BSR04 / 1000x3000MM

SIMPLE TREND

The style of the modern office gradually tends to be simple and generous, reflecting the trend of the modern trend, but also abandoning the traditional too complex decoration, and the space is brighter and cleaner.

现代办公室的风格逐渐趋向于简约大方，既体现现代的潮流风向，也摒弃传统过于复杂的装饰，使空间更加明亮洁净。

VISUAL EXPERIENCE

The overall space of the hospital is used to represent pure, elegant white as the main color, multi element fusion of this beautiful and generous fashion space, the visual effect is more outstanding.

医院的整体空间采用了纯洁、端庄的白色作为主色，多元素融合出这个美观大方的时尚空间，视觉效果更为出众。



EMPIRE / BSD01 / 1000x3000MM



SOLID COLOR(GLAZED) / BSP05E+BSP07A / 1000x3000MM

ELEGANT DECORATION



PURE COLOR (FULL BODY) / BSF10B / 1000x3000MM

WALL DECORATION

The exterior wall decorated with the elegant and elegant board has a concise line beauty, the outer outline of the building is perfectly presented, the whole is more stereoscopic, and the modern sense of fashion is rich.

用曼美高雅的大板装饰的外墙，拥有简练的线条美，将建筑的外轮廓完美地呈现出来，整体更加立体，富有现代时尚感。



CUSTOMIZED PRODUCT / BSA05B / 1000x3000MM

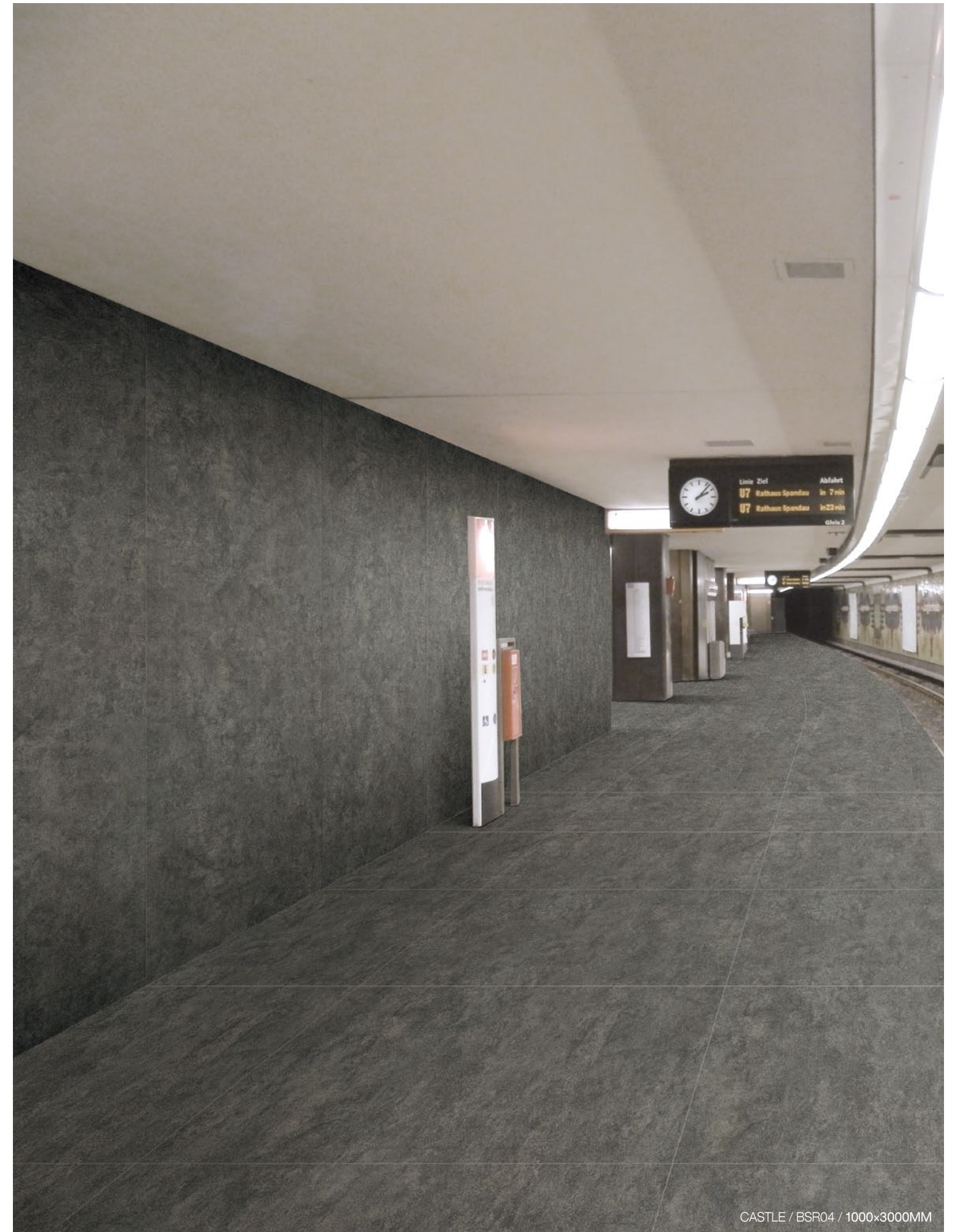


EMPIRE / BSD01 / 1000x3000MM

MODERN SPACE

The beautiful board matches the light and shadow effect, which makes the color and texture of the space more charming. Every detail accords with the modern minimalism style.

矜美的大板搭配上光影效果，令空间的色泽与质感倍加迷人，每一个细节，都符合现代极简主义的风格。





精装篇 HARDCOVER ARTICLES

ELEGANT FASHION

The multi-element fusion creates this beautiful and generous fashion space, displays the modern style charm, lets the person want to relax the tight body and mind, understands this modern high quality life comfortable rhythm.

多元素融合打造出了这个美观大方的时尚空间，表现出现代风格的魅力，让人想要放松紧绷的身心，体会这现代优质生活的舒适节奏。

CUSTOMIZED PRODUCT / BSA05A / 1000x2000MM

家具篇 FURNITURE ARTICLES

ROMANTIC ROOM

In the clean and clean space, both the modern personality of the big board, but also rich in the antique color of household supplies, the two do not show sudden, but also highlight its charming, create a harmonious, natural, romantic room atmosphere.

在干净明洁的空间之中，既有现代个性的大板，也有富有复古颜色的家居用品，两者不显突兀，更突显它的迷人，营造出和谐、自然、浪漫的居室氛围。



CUSTOMIZED PRODUCT / BSN05A / 1000x2000MM



RUST / BSX07(F) / 1000x3000MM

ARTISTIC FLAVOR

A very strong sense of modern sense of space, simple and rich decorative layout, with the rich artistic flavor of the collection, for space added the beauty of fashion and art.

现代感十分强烈的空间，简单而富有条条美的装饰布置，再搭配富有艺术气息的珍藏品，为空间添加了时尚与艺术的美感。



PURE COLOR (FULL BODY) / BSF07+BSF15 / 1000x3000MM



SAND RIPPLE / BSE10A / 1000x3000MM

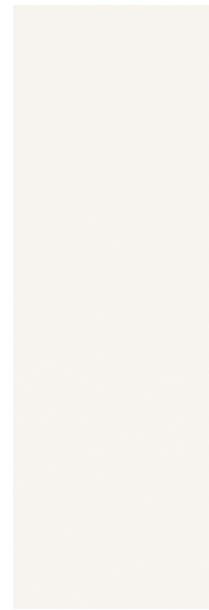


陶瓷薄板工程案例（部分） KEY PROJECT LIST(PART)

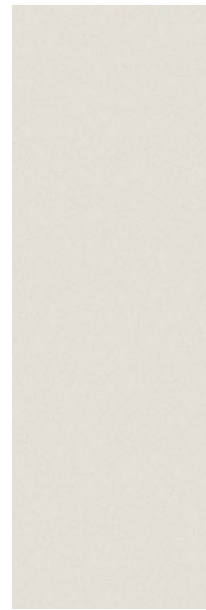
序号	省份	工程名称
1	福建省	厦门市中山医院新住院大楼
2	福建省	厦门市向阳坊食品有限公司（厦门 / 福州 / 天津）
3	福建省	福州市女子监狱办公楼
4	福建省	福州市连江五中文体楼
5	福建省	福州市南京军区福州总院
6	福建省	莆田市第一医院
7	福建省	泉州市海关报关查验中心
8	福建省	龙岩市高速公路服务区
9	福建省	龙岩市第三医院
10	广东省	深圳市深业上城
11	广东省	深圳市华润柏瑞花园（南区）
12	广东省	深圳市半岛城邦三期
13	广东省	深圳市创凌通科技大厦
14	广东省	深圳市基金大厦
15	广东省	深圳市地铁科技大厦
16	广东省	深圳市宝安嘉州商务中心
17	广东省	广州市和睦家医疗连锁
18	广东省	东莞市小天才科技有限公司研发中心
19	广东省	佛山市绿岛湖壹号售楼处
20	广东省	汕尾市深汕特别合作区办公室
21	江西省	高安市群乔集团公司厂房
22	安徽省	五河县人民医院
23	浙江省	杭州市景瑞天赋
24	上海市	上海市世贸大厦
25	上海市	上海市申通地铁 17 号线（汇金路站、青浦路站）
26	山西省	太原市中海迎泽桥小区
27	陕西省	西安市高科麓湾国际社区
28	河北省	石家庄市心脑血管医院
29	天津市	天津市中央大道海河隧道
30	内蒙古自治区	赤峰市赤峰学院第二附属医院
31	内蒙古自治区	锡林郭勒盟医院
32	内蒙古自治区	巴彦淖尔市医院
33	韩国	NH 农协保险公司大厦



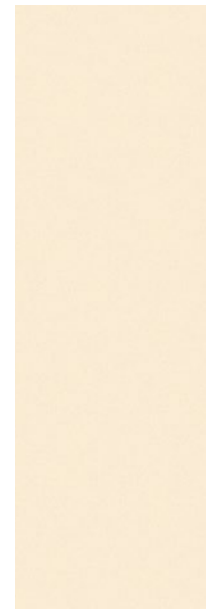
纯色 (釉面)
SOLID COLOR (GLAZED)



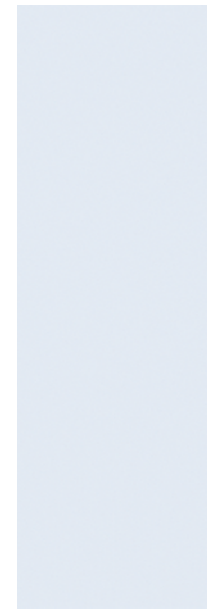
BSP01



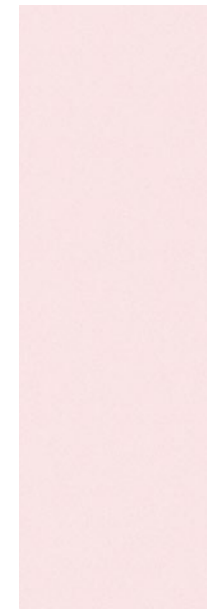
BSP05E



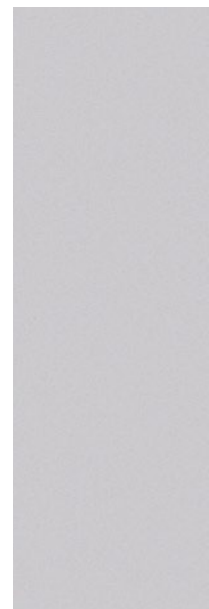
BSP08A



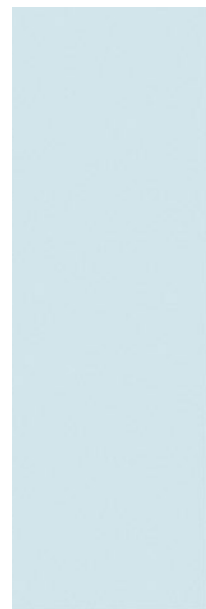
BSP05C



BSP03A



BSP05B



BSP07A



BSP09



BSP06A



BSP10A

纯色 (通体)
PURE COLOR (FULL BODY)



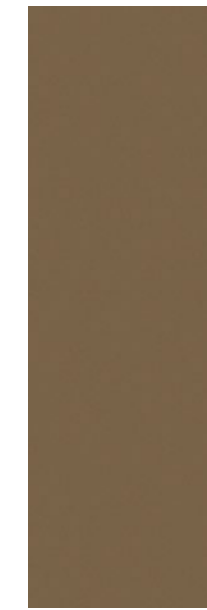
BSF15



BSF25



BSF19



BSF29



BSF18



BSF28



BSF04



BSF07



布纹
WALL PAPER



BSZ08



BSZ05



BSZ09



BSZ10

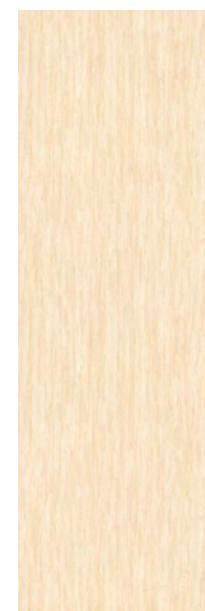
时尚
STYLE SELECTINS



BSS03



BSS01A



BSS02



BSS16



BSS09

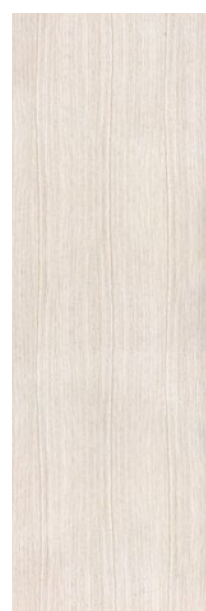


BSS10

帝国
EMPIRE



BSD01



BSD02

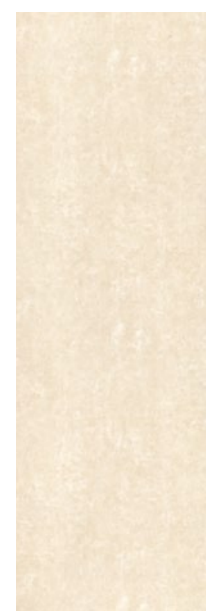


BSD05

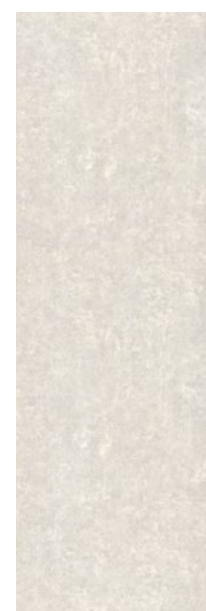


BSD10

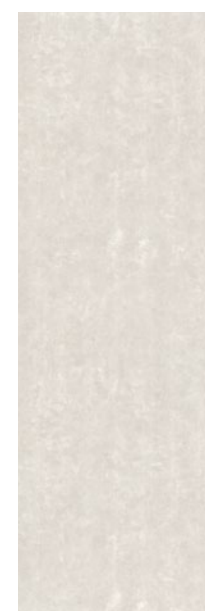
微风
BREEZE



BSI02



BSI05



BSI05A



BSI06



BSI09



BSI10A(F)



古堡
CASTLE



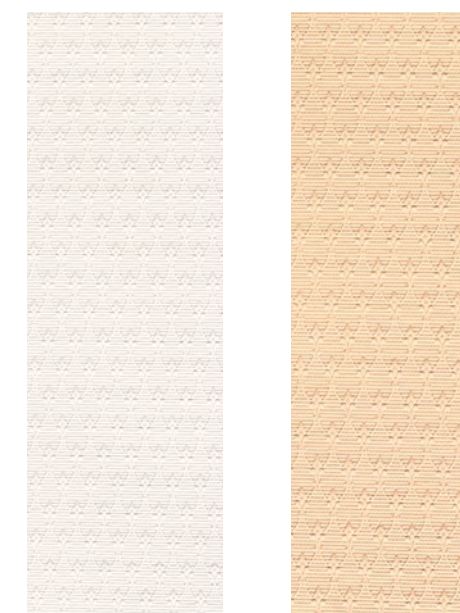
BSR02 BSR05 BSR15 BSR07 BSR04 BSR10

皮纹
LEATHER



BSQ01 BSQ02

雕花
EMBOSS



BSM01 BSM02

沙纹
SAND RIPPLE

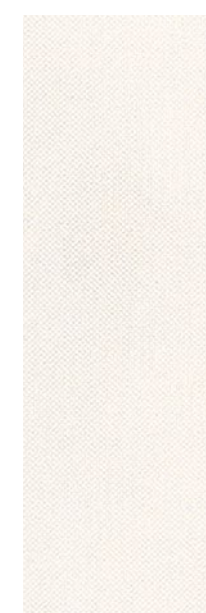


BSE01

珍珠
PEARL



BSE09



BSG01A



BSG10B

铁锈
RUST



BSX06(F)



BSX07(F)

硅岩
SILICASTONE



BSO05

板纹
SLATE STYLE



BSL02

木纹
WOOD LOOK



BSW08



BSW09



BSW06A



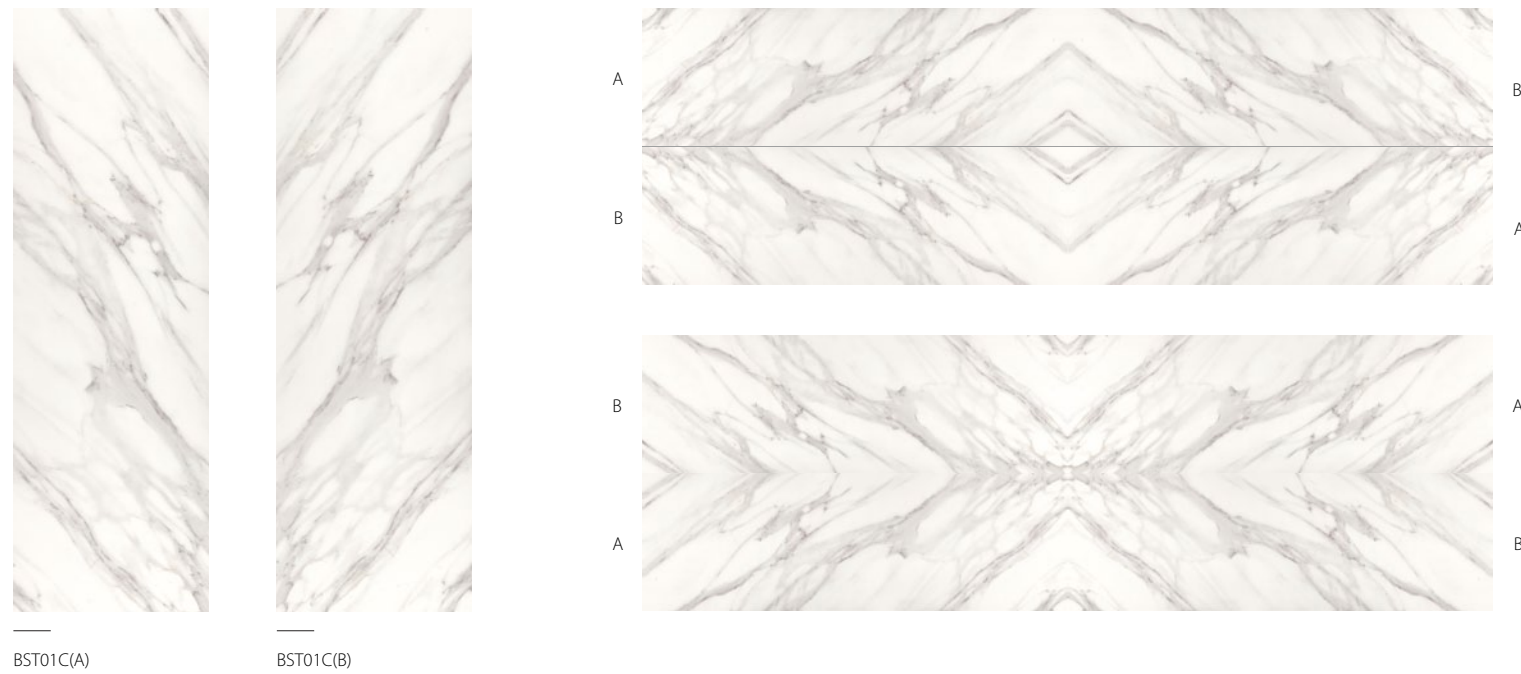
卡拉拉 (一体六面)
CARRARA (SIX PATTERNS)



客定品
CUSTOMIZED PRODUCT



卡拉拉 (对拼)
CARRARA (SYMMETRY)



施工说明 TECHNICAL DETAILS

搬运 HANDLING



The manual suction tray can be installed on the other side of the big board for easy movement.

可安装手动吸盘在大板另一面，方便拿起。



Install the metal support on the back of the big board, and fix it on the big board to increase the stability of the big board.

在大板背部安装金属支架，固定在大板上增加稳定性。



It is suggested that truck transportation and forklift trucks be lifted to reduce the damage of the fixed plate.

建议使用货车运输和叉车抬降，做好固定大板的工作，以免破损。

钻孔 DRILLING



The manual cutting machine can cut the square adjusting holes on the large plate at any time.

手动切割机可以任意切割需要的方形调孔。



First place the position of the drilled hole in the ceramic plate and then drill it with a diamond-shaped round drill bit.

先在陶瓷大板把将要钻孔位置定好位，再用安装有金刚石圆形钻头钻孔。



Once the ceramic plate is drilled or cut, it must be carefully handled and placed.

陶瓷大板一旦钻孔或切割后要小心搬运和放置。

切割 CUTTING



It is suggested that the cutting route should be planned before cutting the big board.

建议在切割前，先对大板进行切割路线的规划。



Use a glass knife that cuts straight lines to cut down on the glaze of a large plate for easy cutting.

用切割直线的玻璃刀在釉面划下割线。



Use the cutting machine to cut along the cutting line, grinding paper to smooth the sharp edges.

用切割机沿着切割线进行切割，用磨砂纸将锋利边缘磨平。

铺贴 PAVING



Use the scraper to spread the adhesive on the floor and the big board, and smear it flat to facilitate the placement.

用刮刀把粘合剂平整地涂抹在地板与大板上。



After big board paving, please reserve 2mm space to prevent cold shrink and heat rise.

大板铺贴后，预留2mm空隙预防冷缩热胀。



After laying, the large plate is compacted, so that the inner layer is completely combined to ensure smooth surface.

铺贴后将大板压实，让内层完全密合并保证表面平整。

Application Range / 应用范围

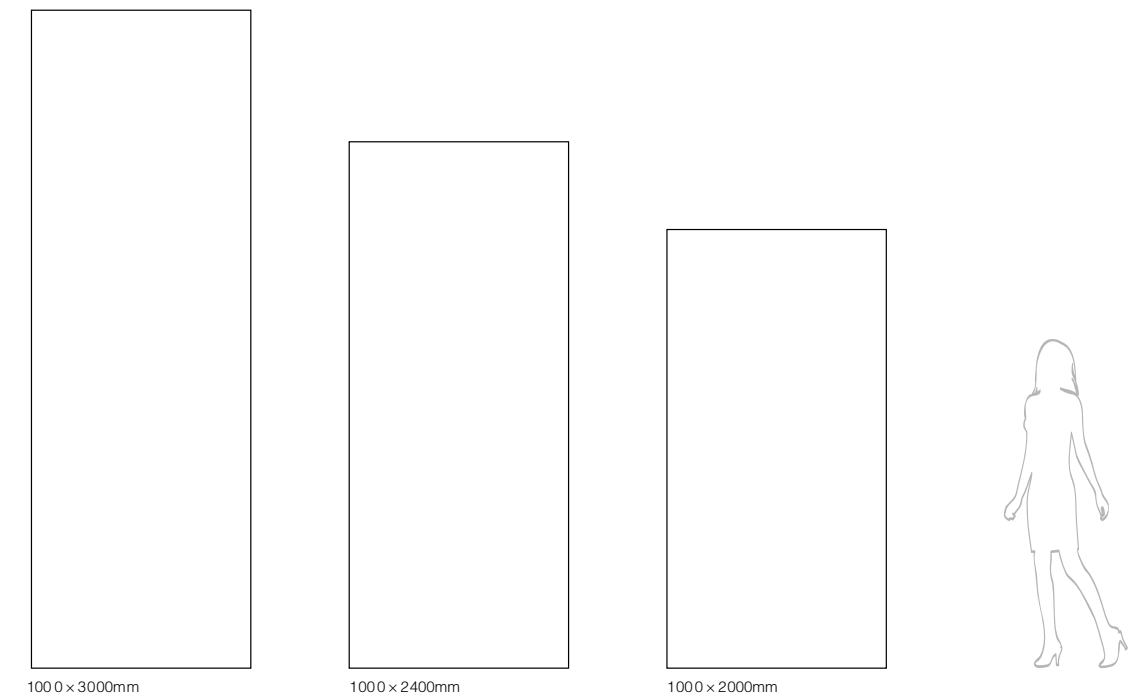
	Redecorating 二次装修 不必敲下旧地砖，施工时直接粘帖覆盖旧地砖安全、省时、又省工。
	Indoor wall/Outdoor wall 室内外墙砖 大规格铺贴气派、豪华、迅速、方便。
	Indoor room divider 室内隔间 可以设计活动式室内隔间，多出更大室内使用空间。
	Composite panel partition 复合隔墙板 背面加工贴上蜂窝铝板的隔墙板是为了强化隔音、隔冷热的最佳绝缘体。
	Table、Cupboard 桌面、橱柜 取代木质板材制作桌面、橱柜防火又安全好清理。
	Home decoration painting 家居装饰画 高达95%以上的色彩高仿真效果，可以配合设计搭配任何素材。

Technical Data / 技术参数

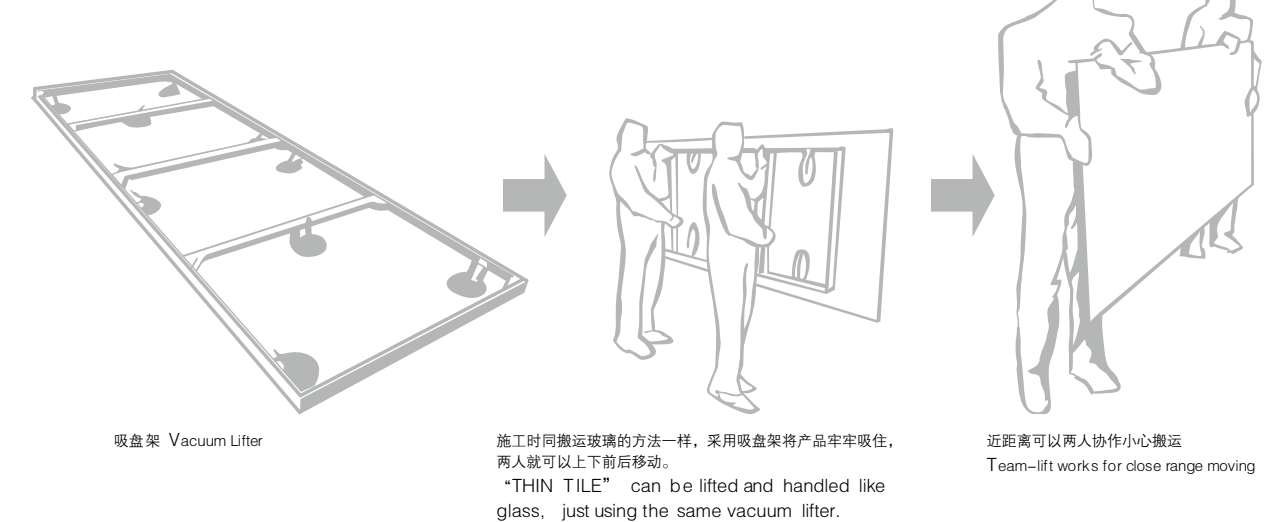
	Industrial Standard 工业标准 【参照陶瓷板国家标准GB/T23266-2009】	Sanwon THIN TILE 三荣“新瓷”数据
 Springiness limit 弹性限度	No less than 12mm 弹性限度不小于12mm	15mm
 Water absorption 吸水率	Average E≤0.5%, Individual E≤0.6% 平均值 E≤0.5%, 单值 E≤0.6%	E≤0.5%
 Modulus of rupture 断裂模数	Average ≥45MPa, Individual ≥40MPa 平均值 ≥45MPa, 单值 ≥40MPa	≥50MPa
 Abrasion resistance 耐磨性	Floor tile: UL, ≤150mm ³ ; GL, minimal class3@750cycles 地板用无釉陶瓷板耐磨损体积不大于150mm ³ ; 地板用有釉陶瓷板耐磨性不低于3级(转数750转)	Qualified 合格
 Crazing resistance 抗釉裂性	Free from visible defects after test 有釉陶瓷板经抗釉裂性试验后应无裂纹或剥落	Qualified 合格
 Frost resistance 抗冻性	Free from visible defects after test 用于冰冻环境的陶瓷板经抗冻试验后应无裂纹或剥落	Qualified 合格
 Resistance to staining 耐污染性	Minimum class3 for glazed tile 有釉瓷质板经耐污染试验后应不低于3级	Class4
 Thermal shock resistance 抗热震性	Free from visible defects after test 经抗热震试验后应无裂纹或剥落	Qualified 合格
 Household Chemicals 家庭用化学	Minimum UB for unglazed tile 无釉瓷质板应不低于UB级	UA/GA
 Swimming Pool Salts 游泳池盐类	Minimum GB for glazed tile 有釉瓷质板应不低于GB级	
 Acids 酸溶液	Manufactory state the class level passed 制造商报告产品耐低浓度酸腐蚀性的级别	UA/GA
 Alkalis 碱溶液	Manufactory state the class level passed 制造商报告产品耐低浓度碱腐蚀性的级别	UA/GA
 Length & Width 长度和宽度	± 1.0 mm	± 1.0 mm
 Thickness 厚度	± 0.3 mm	± 0.3 mm
 Opposite size difference 对边长度差	≤ 1.0 mm	≤ 1.0 mm
 Diagonal difference 对角线长度差	≤ 1.5 mm	≤ 1.5 mm

电话: 0757-83328420

Dimensions / 基本尺寸



Handling / 搬运方式



Packing / 包装方式

Product Size 产品规格 (mm)	Quantity 包装片数	Coverage 包装面积			Weight 包装重量		
	pcs/ctn (片/铁架)	m ² /pcs (m ² /片)	pcs/m ² (片/m ²)	m ² /ctn (m ² /铁架)	Kg/pcs (公斤/片)	Kg/m ² (公斤/m ²)	Kg/ctn (公斤/铁架)
1000*2000*4.5	100	2.0	0.50	200	20	10	2100
1000*2400*4.5	80	2.4	0.42	192	24	10	2100
1000*3000*4.5	60	3.0	0.33	180	30	10	2000